

# Angel Mounds (12Vg1) Collection Profile

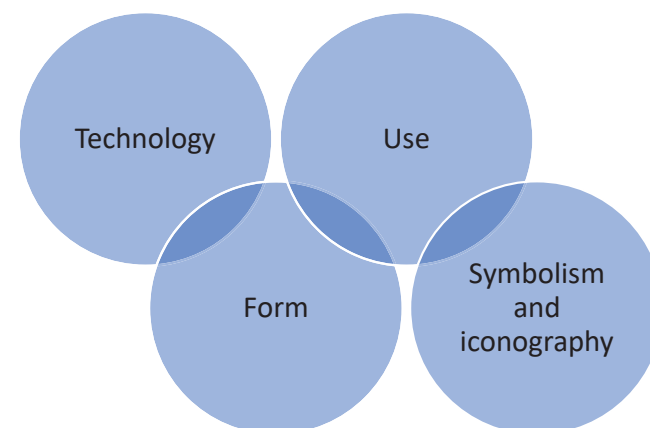


These images were selected to provide a snapshot of the collections from the Angel Mounds State Historic site (12Vg1). The items depicted include those that are commonly found in domestic settings, as well as items that likely had more restricted and power-laden uses and meanings for the people who lived at Angel.

This is a first pass through the collections organized generally by material category. We will be rebuilding reference collections and welcome your input.

The assemblage as presented is at the site level. As such it provides a snapshot of materials and items that would have been available to the people living at the site.

The catalog also tells us about the state of preservation of items that comprise the archaeological record of the site.

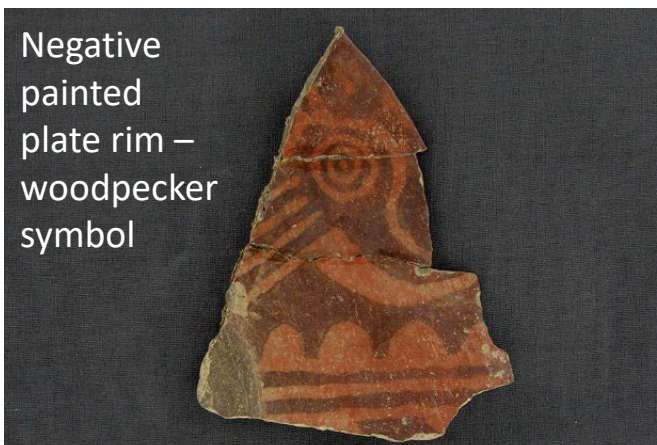


# Angel Mounds (12Vg1) Collection



Negative painted plate rim –  
sun circle symbol

- Indiana Historical Society/Indiana University
  - Donations
  - Excavations – 1939-1964 directed by Glenn Black
  - In excess of 2 million objects
- Indiana University GBL (post 1971)
  - Excavations – IU Field Schools directed by James Kellar and Christopher Peebles
  - Approaching 1 million objects



Negative  
painted  
plate rim –  
woodpecker  
symbol

- Currently collections are being rejuvenated
  - Rehoused
  - Database enhancements
  - Reference collection work



Rim Rider  
sherd –  
owl



# Ceramic containers

Nearly 2 million sherds

Approximately 100 whole or partial vessels

1 -Bottles, 2- bowls, 3- jars, and 4 –negative painted plates: storage, cooking, serving, transport

Various sizes, including miniatures

Plain and decorated

Examples span pre-and post-occupation of Angel

Styles of decoration and form reveal connections with other Mississippian sites, including Cahokia and Kincaid and others

Shell, stone, clay, minerals, repurposed sherds as temper



Shell temper



Fabric impressed



Jar with handles



Jar without handles



Jar with handles



Bottle



Bowl, plain



Bowl, negative painted



1116-5935



1116-694



1116-694

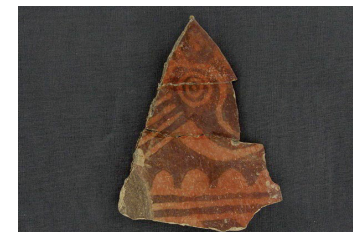


1116-694



Miniature vessels

## Negative Painted Plate Sherds



1116-694-0



1116-694-0



1116-694-0



1116-694-0



# Ceramic containers

Bowl effigy handles applied to opposite sides of the bowl lip

- Mammal
- Bird
- Fish and Frog
- Conch or gourd
- Human

## Ramey Incised Jars

90 rim and body sherds with curvilinear scroll patterns

Paste is less fine and surface less smoothed and polished compared to Ramey Incised jars from Cahokia

### Effigy Handle Bowls



Duck



Duck



Fish



Owl



Duck



Woodpecker

### Ramey Incised jar sherds





# Other Ceramic Items

Nearly 20,000

1- Rattles – human, owl, deer, duck

2- Figurines – owl, human, snake/grooved (not pictured – bear and dog)

3- Ear plugs and spools

4- Discs

5- Spindle whorls

6- Fired clay balls

7- Pottery trowels



# Chipped Stone

20,000+

Knives – lance / spear points

Arrow points

Hoes and sharpening flakes

Adzes

Flake scrapers and cutting tools

Drills



Ramey Knife



Triangular arrow points



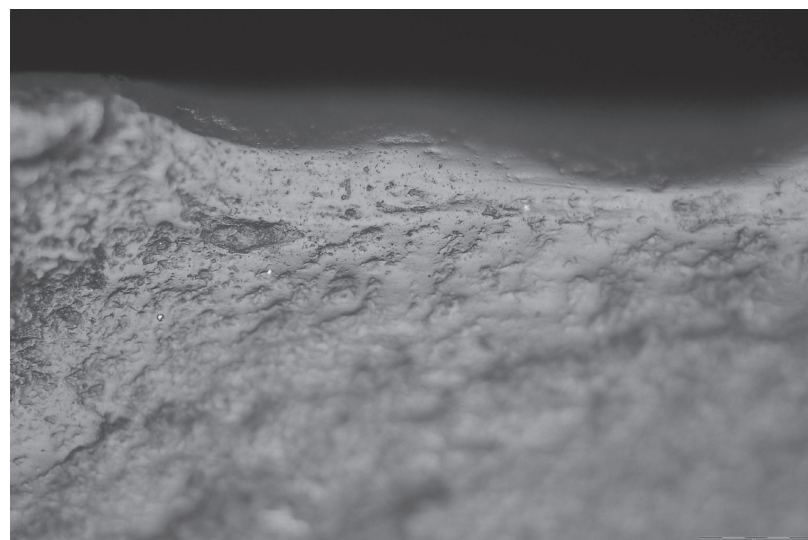
Hoe Blade



Top row:  
3 Blades (Middle  
Woodland origin?)

Bottom row:  
L-R: hoe flake,  
scraper, 2 drills





200x magnification shows polish through reflected light

# Ground Stone

3,000+

Axes, adzes and celts-  
woodworking and weaponry –  
would have been inserted into  
a wooden handle

Discoidals

Abrading and grinding stones

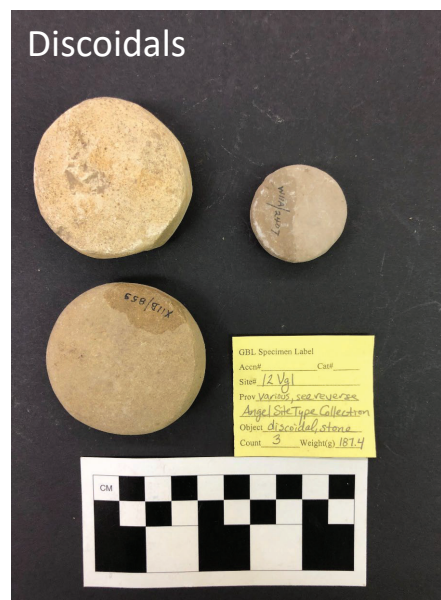
Anvils

Hammerstones

Sandstone tablets



## Grooved abrading stones



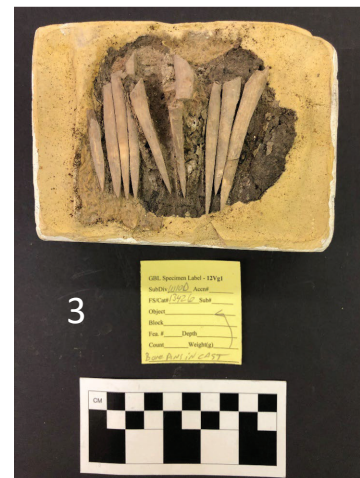
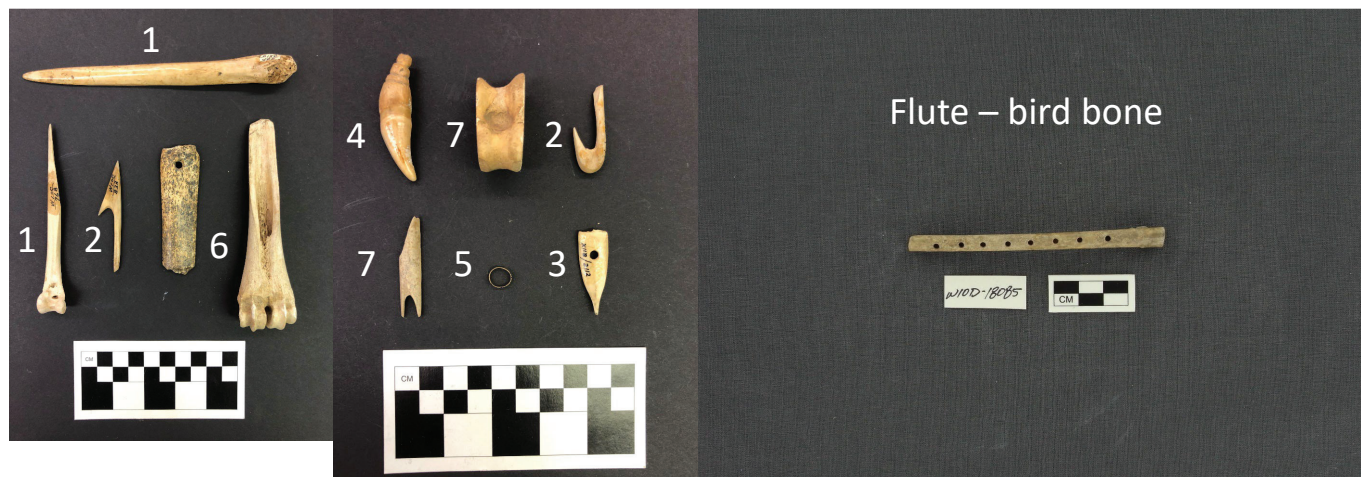


# Animal Bone Items

Bone and shell items  
2,100

- Fishing
- Hunting
- Music
- Scarification/tattooing?
- Weaving/sewing
- Personal adornment
- Handles
- Manufacturing

- 1- Awl
- 2- Fish hook
- 3- Needle
- 4- Bear canine pendant
- 5- Bone ring
- 6- Handle
- 7- Unknown



# Shell Items

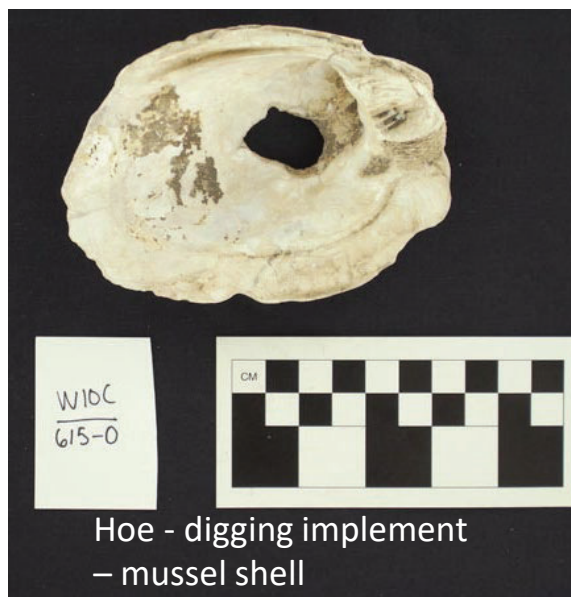
Scraping tools

Hoes

Beads



Scraping tool – mussel shell



Hoe - digging implement  
– mussel shell

Disk-shaped beads—marine shell?

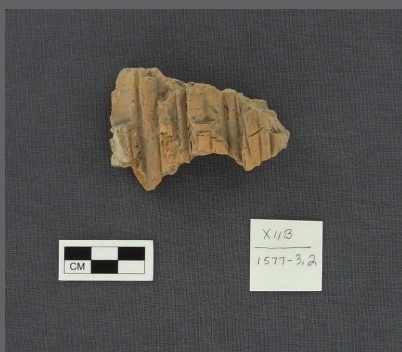




# Daub 40,000+

Painted (red, black, buff color, and blue-gray pigments) late 13<sup>th</sup> century in limited areas of the east village.

Cane impressions on a fragment of undecorated daub used in wattle and daub wall construction.



Plastered and Painted Walls – colors and geometric design elements similar to negative painted plate iconography. Ethnohistoric and archaeological sources suggest that painted walls occur on a limited number of structures and places.



Rebecca M. Barzilai (2017) The Painted Daub of the Angel Site (12Vg1). Indiana Archaeology 12(2).

# Smoking pipes

Nearly 300

Made from clay and stone  
– most examples are clay

Plain and decorated

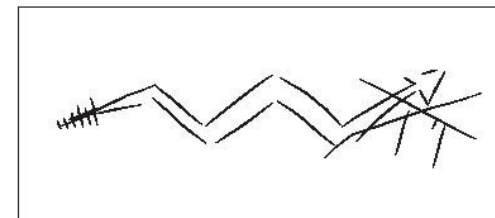
Clay effigy pipe



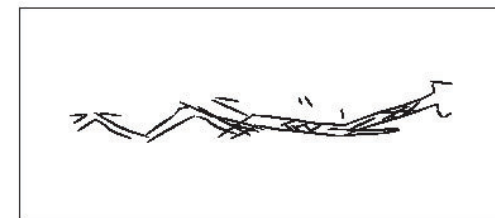
Clay "elbow" pipe



Catlinite disc pipe



Engraved Motif on the base of a Catlinite Pipe from Angel Mounds (12Vg1, X11B, FS1306)



Engraved Motif on the side of a Catlinite Pipe from Angel Mounds (12Vg1, X11B, FS1306)



# Minerals, Crystals, Pigment Stones, Fossils

700+

1- Copper

2- Cannel Coal

3- Fluorite

4- Mica

5- Ochre – red and yellow

6- Hematite

7- Mammoth or mastodon foot bone

[Not shown – galena, quartz crystals]

1-copper awl



1-worked copper



2-cannel coal objects



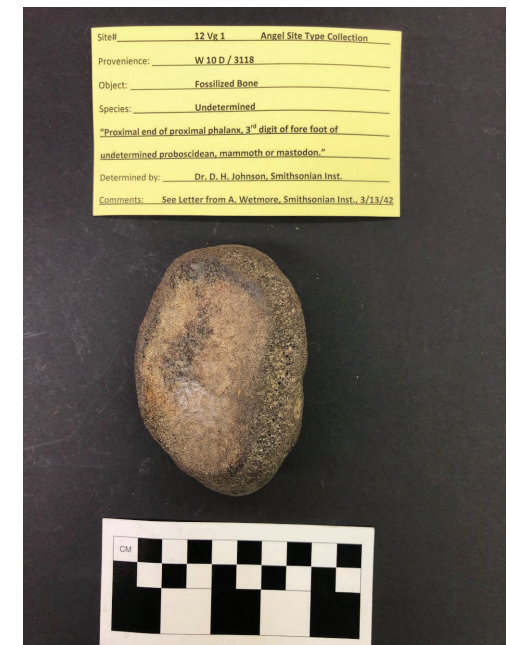
3-Fluorite



4-Mica



7-Mastodon/mammoth foot bone



5-Red ochre



6-worked hematite



# Plants and Animals

600,000+

Subsistence, tools, medicine, pigments, ornamentation, trade, clothing, performance / ritual practices

Corn – cobs, cupules and kernels  
 Bean  
 Squash  
 Starchy seed plants  
 Wood (southern yellow pine, hickory)  
 River Cane  
 Hickory, pecan, pignut  
 Wild cherry, grape, mulberry  
 Paw paw

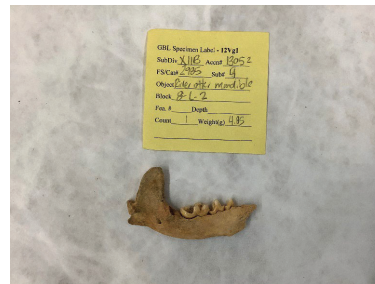
Deer  
 Elk  
 Bear  
 Bob cat  
 Turkey  
 Fish and shellfish  
 Ducks  
 Swan  
 Birds (eagle, hawks, quail, woodpecker, blue jay)  
 Turtle  
 Small mammals  
 Reptiles



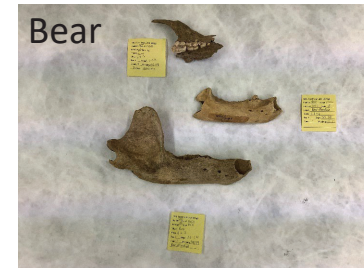
Charred corn cob



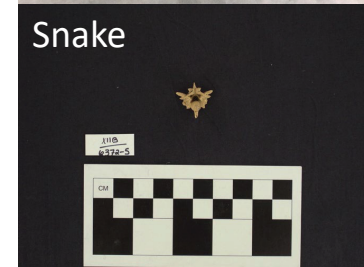
Elk vertebrae, fused



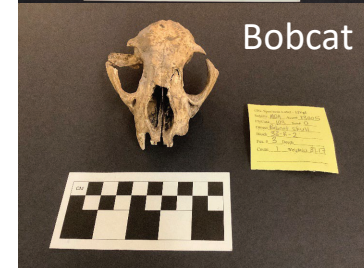
River otter



Bear



Snake



Bobcat



Domestic dog



# Euro-American Items



Gun Flint



Copper Penny-early 19<sup>th</sup> century